



Antwerp vs Shakhtar Donetsk

Wed 4 Oct 19:45

Інструкція для вболівальників ФК Шахтар

Шановні вболівальники!



Перш за все дякуємо вам за вашу можливість підтримати команду ФК Шахтар у протистоянні з бельгійською командою ФК Антверпен у Бельгії.

Ми просимо вас уважно прочитати цю інструкцію та дотримуватися віх правил та вимог приймаючої сторони.

1. Ви отримали ваучер який вам потрібно обміняти на квиток (зразок ваучера нижче);
2. **В день матчу (з 15:30 – 17:30 по місцевому часу)** - вам потрібно самостійно приїхати на місце обміну ваучерів на квитки;
3. Адреса місця обміну ваучерів на квитки - **Parking Spoor Oost, 2140 Antwerp, Belgium** (геолокація та точки на карті ви зможете знайти нижче);
4. Після обміну ваучера на квиток для всіх вболівальників будуть організовані автобуси і трансфер з місця обміну до стадіону;

Важливо (!)

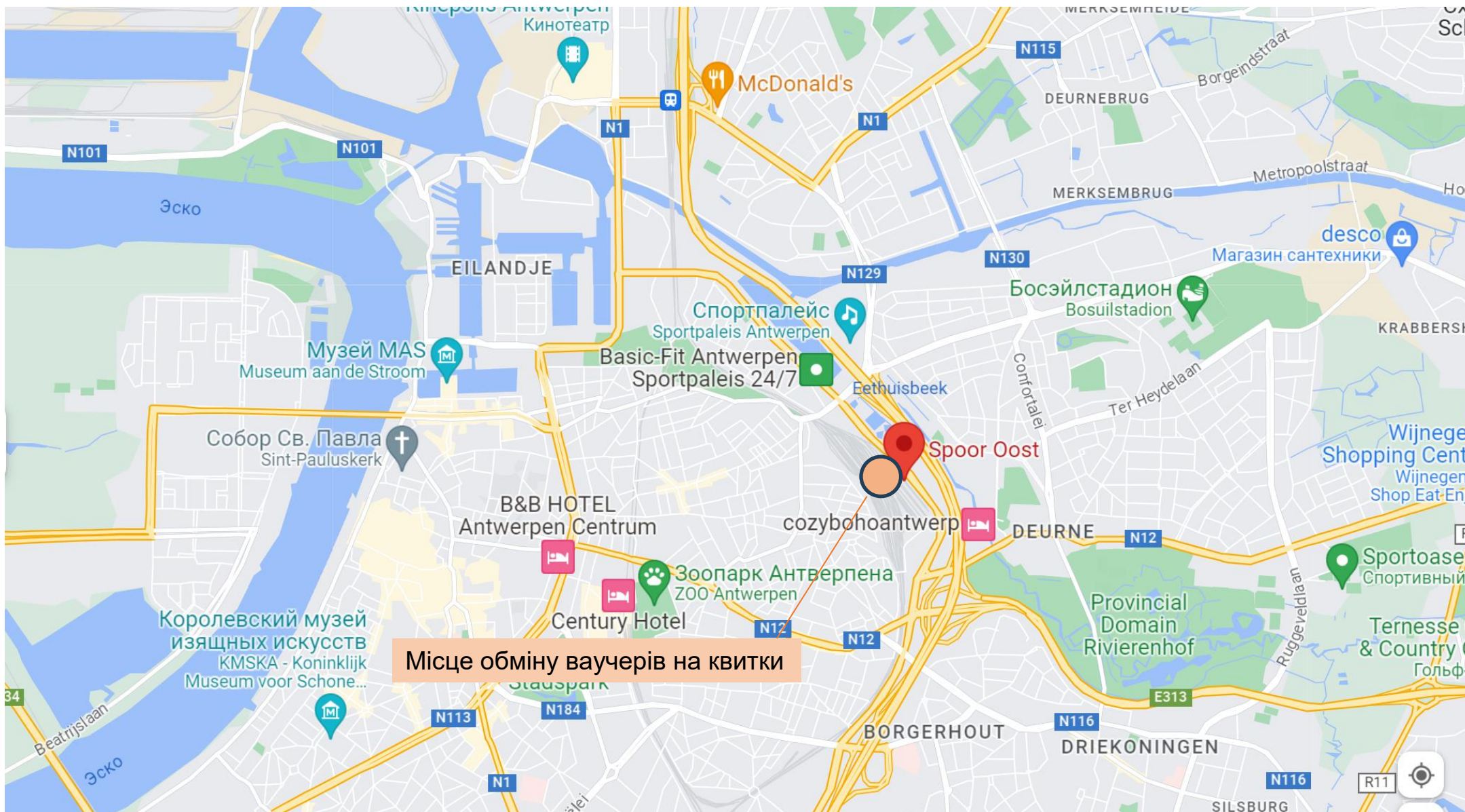
1. **На місце обміну повинні приїхати усі вболівальники особисто;**
2. **Місцева поліція дозволить прохід до місця обміну лише тих вболівальників, які пред'являть ваучер;**
3. **Обмін проводиться лише з посвідченням особи. Обов'язково мати при собі посвідчення особи;**
4. **Всі квитки персоналізовані з ім'ям та прізвищем на квитках;**
5. **Ваучери дають лише доступ до місця сбору та обміну, вони не є дійсними квитками.**

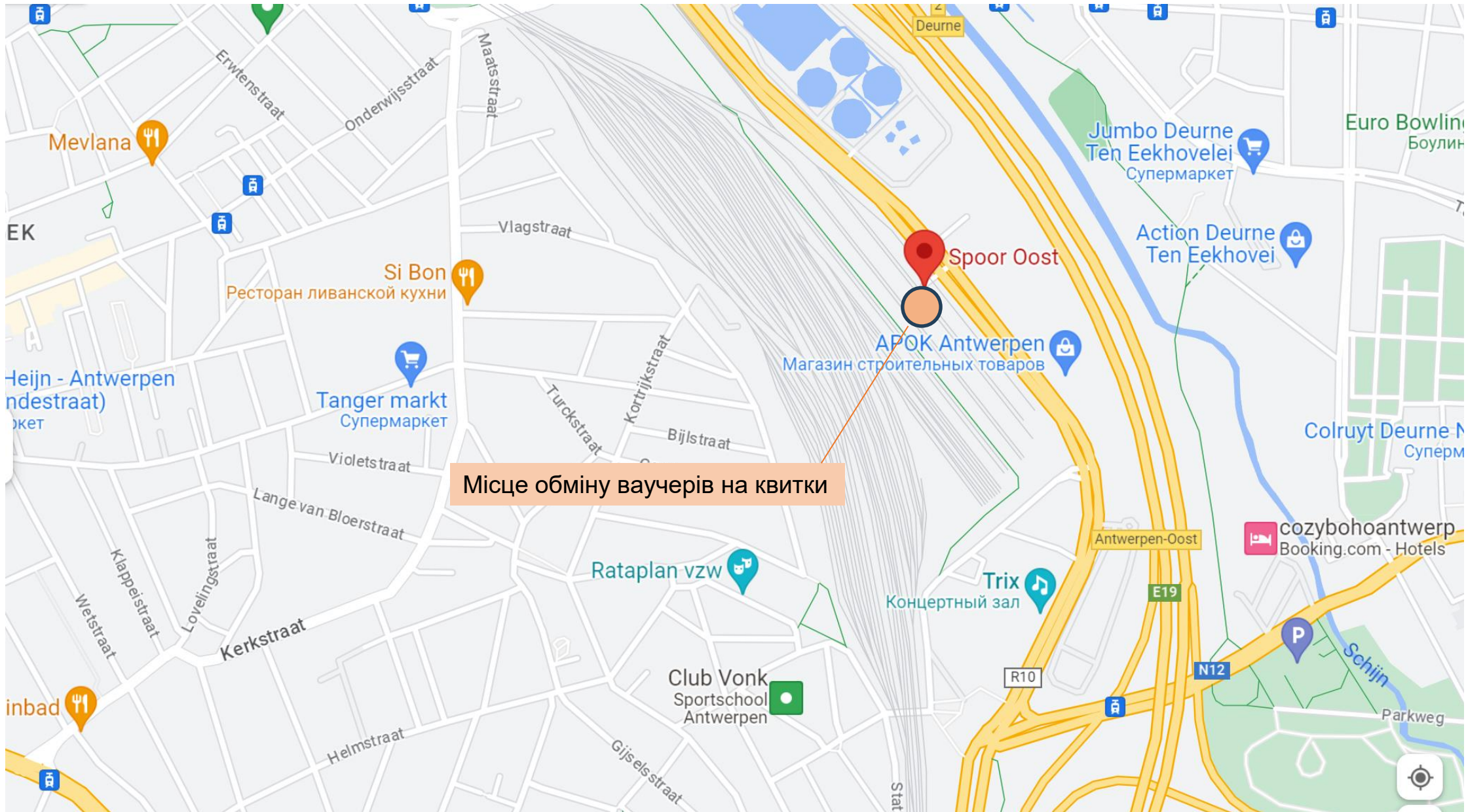


Wednesday 04/10/2023 - 18:45
Royal Antwerp FC - Shakhtar Donetsk

VOUCHER

зразок ваучера





Місце обміну ваучерів на квитки





TRAVELLING TO ANTWERP

by air

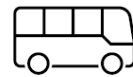
Brussels Airport (Zaventem Airport)

Brussels Airport is the most frequently used gateway to Antwerp. You can travel to Antwerp by:



TRAIN The direct train to Antwerp takes approximately 37 minutes and runs twice an hour.

Time schedules and fares are available on the [Belgian Railways website](#).



BUS Travel in 45 minutes from Brussels Airport Zaventem to Antwerp with [Airport Express](#). There are two stops in Antwerp:

1. Franklin Rooseveltplaats (Platform B5 - on the side of the opera house and 400 meters from the Grand Central Station).
2. Crowne Plaza Hotel (Gerard le Grellelaan 10, Antwerp)

TRAVELLING TO ANTWERP

public transport



TRAIN

Antwerp has two main stations: Antwerp-Central Station and Antwerp-Berchem Station.

International railway lines link Brussels and Antwerp to several other major European cities. The European high-speed train project includes the Thalys and the Eurostar. There are direct rail links with different cities in France, the Netherlands and Germany. Antwerp can be reached from the UK by Eurostar via Brussels.

For more information consult the [Belgian Railways website](#).



BUS/TRAM

Within the province and the city of Antwerp transport is organised by the public transport company [De Lijn](#).

Buses leave to all parts of the city from Antwerp Central Station. From the bus station Rooseveltplaats which is close to the Central Station. There are direct bus links to various other towns and cities.



CAR

Antwerp lies at the crossroads of the E17, E19, E34, and E313 motorways. Please consult Smart ways to Antwerp to plan your trip.

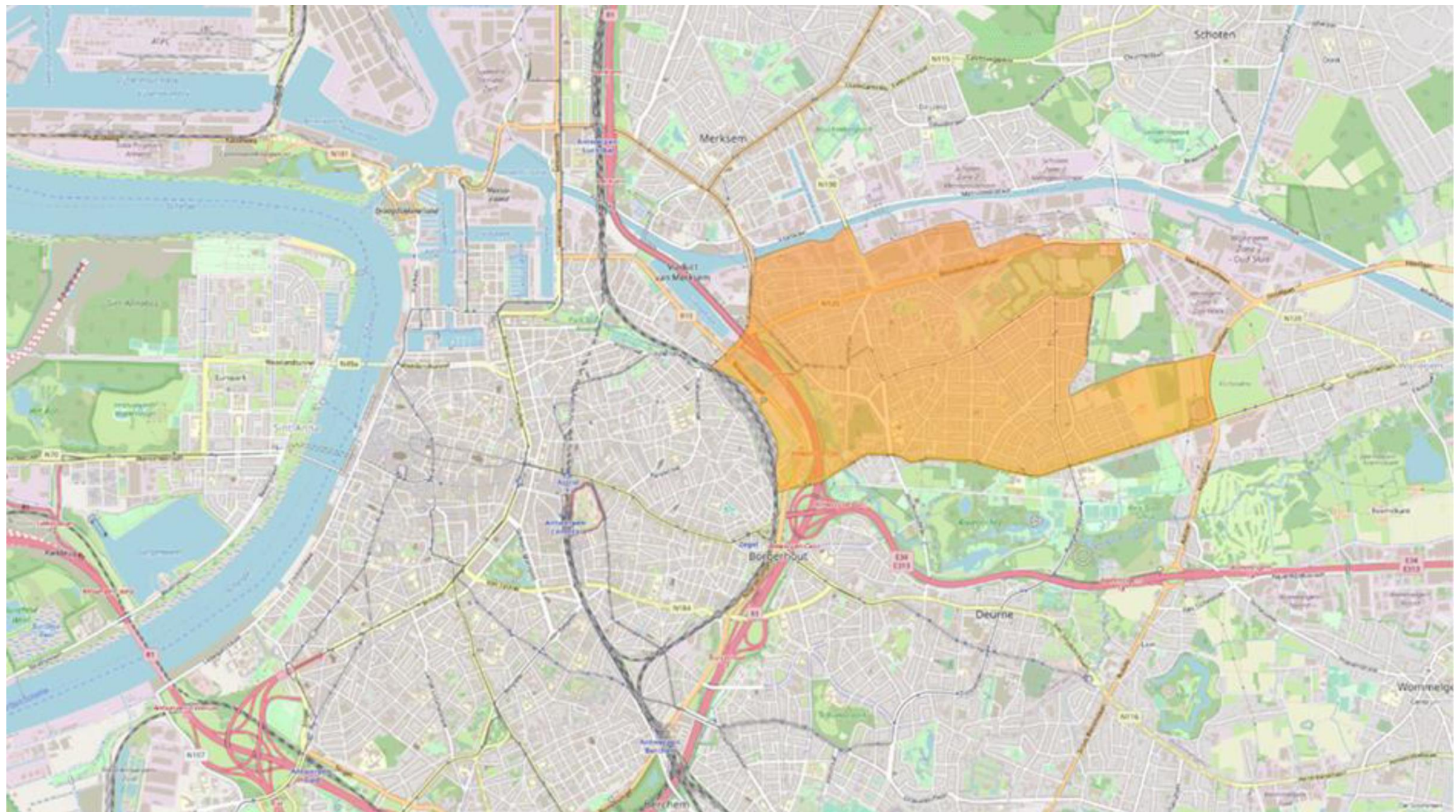
Low emission zones: as of 1 February 2017, Antwerp's city centre and part of Linkeroever on the left bank are low emission zones. The most polluting cars are no longer welcome in the city. The low emission zone is like in London, where foreigners have to register their vehicle before entering the first time. No sticker required. You only need to register your foreign vehicle once in Flanders.

Perimeter



A security perimeter is set up around the stadium. Visiting supporters are not allowed to enter this perimeter during their stay. Violating the perimeter can lead to an administrative arrest and fines.





Meeting point (obliged)

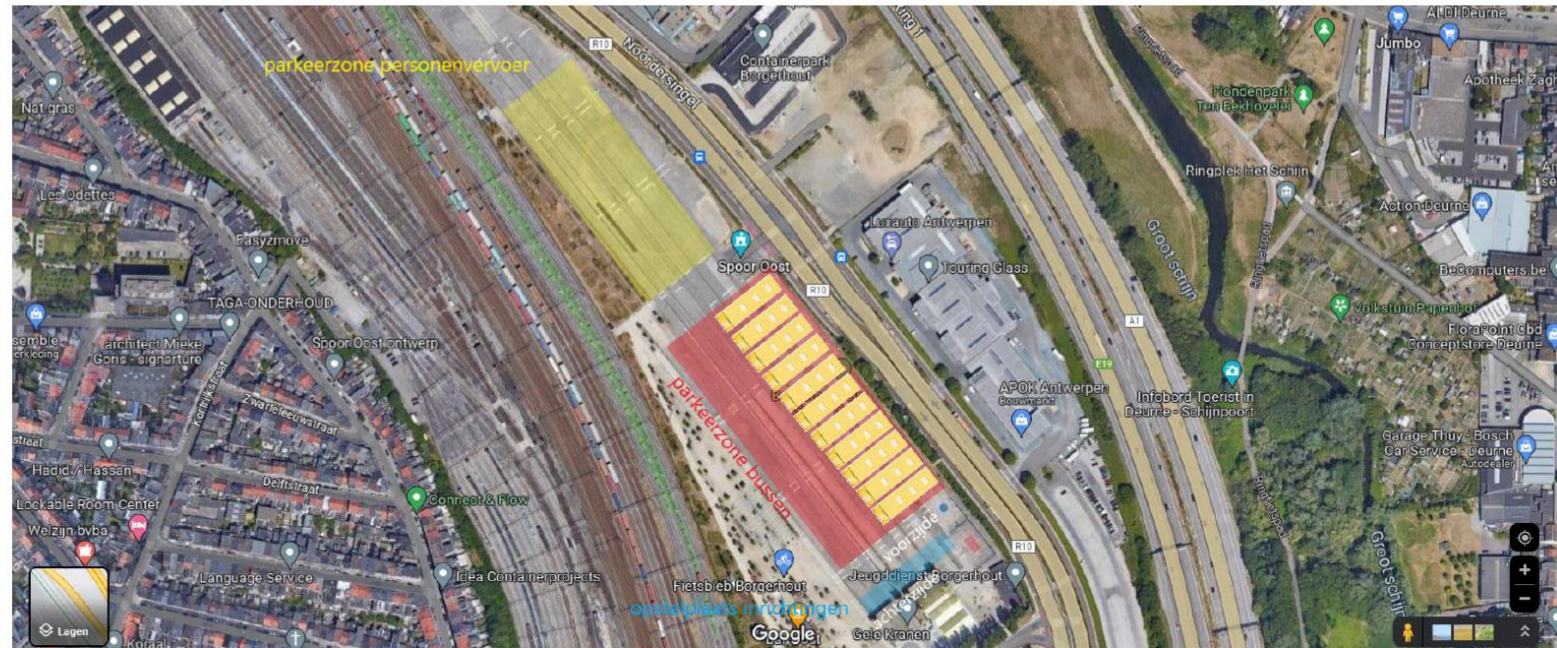


There will be an (obliged) open-air fan meeting point for visiting supporters. Visiting supporters are obliged to travel to the stadium by coach from the meeting point.

From this meeting point, all supporters with a valid ticket will travel by busses to the stadium. Transportation needs to be organized by the visiting club. If necessary, we can bring you in contact with some bus companies.

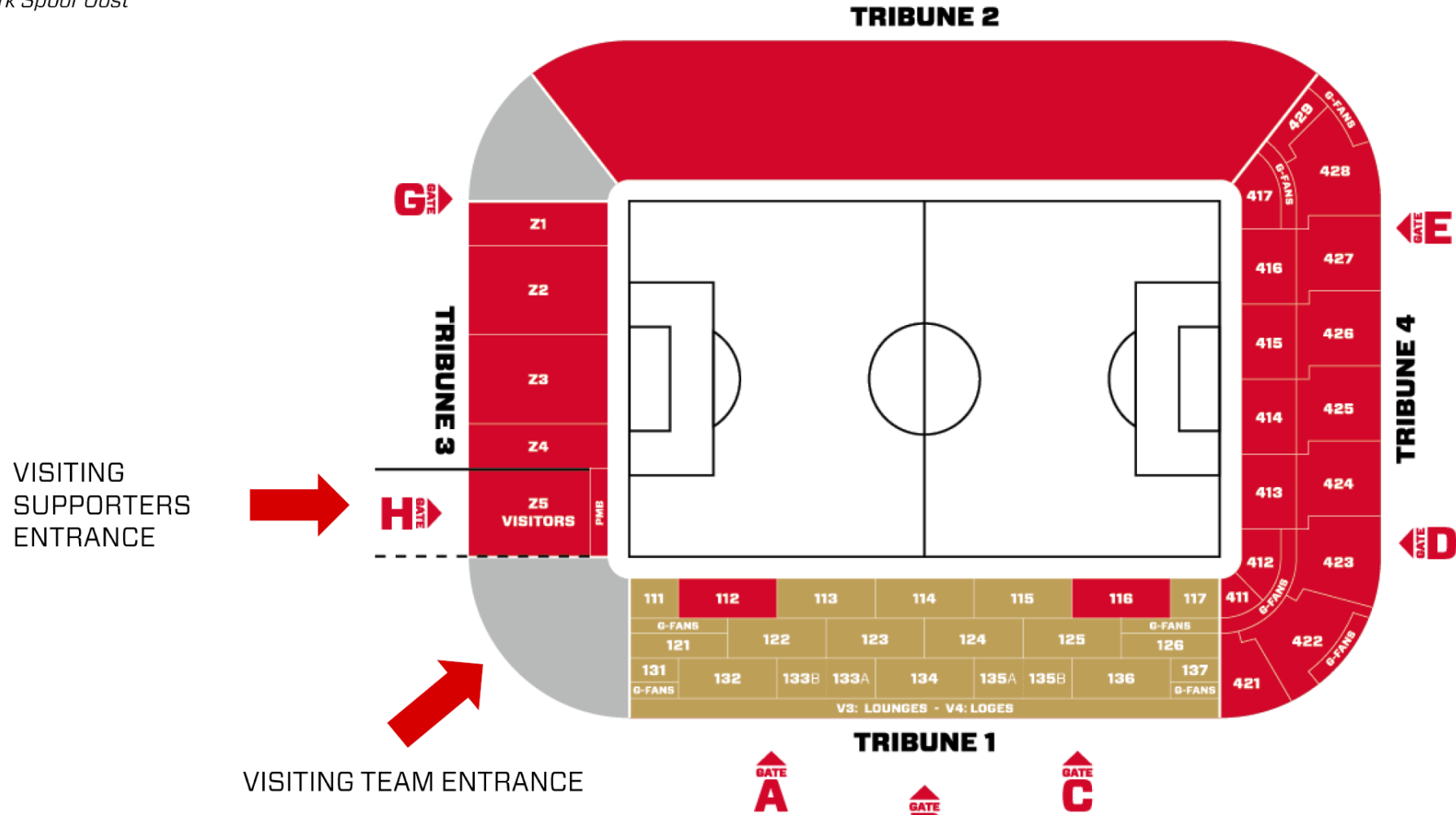
For your own safety, travelling to the stadium with individual transport is not allowed. Access to the stadium will be denied.

Detailed information will be provided in time.



STADIUM ENTRANCE

Meeting point: Park Spoor Oost





STADIUM ENTRANCE



10 places for wheelchair users and their chaperones in front of the stand.
There is no elevator available.



Turnstiles will open 1 hours and 30 minutes before kick-off.



Any objects which are larger than 21cm x 29,7cm are not allowed.
Security and bag searches will take place when entering the stadium.



Tickets are not transferable and cannot be used by any other supporter.
Supporters may be asked to show their ID on matchday.



Alcohol will be served in the stadium and can be taken to the seats during the game.
There is one service point in the area for supporters for drinks and one for food:
cards only. The service points are closing 15 minutes before the end of the game.

STADIUM RULES



Weapons of any kind



Fireworks, flares, smoke powder, smoke bombs or other pyrotechnics



Banners or flags larger than 2m x 1,5m



Flagpoles or banner poles of any kind that exceed 2,5m x 2,2cm



Animals or pets, except guide dogs



Bottles, jugs or cans of any kind



Alcoholic beverages of any kind, drugs



Long umbrellas, helmets



Propaganda material



Large quantities of paper and/or rolls of paper



Any objects which are larger than 21cm x 29,7cm



Any promotional, commercial objects or materials, including banners, signs, symbols and leaflets



Gas spray cans



Professional cameras and video cameras or other professional sound or video recording equipment



Electronically, mechanically or manually operated sound-emitting devices such as megaphones or klaxons